

Foaminator® Dry

Decreases spray-tank mixing and filling time with aggressive foam-breaking activity.

A highly effective silicone emulsion, Foaminator Dry reduces material lost when spray tanks foam over. It is a highly concentrated, free-flowing formulation that controls excessive foaming without interaction with spray mixture active ingredients. Foaminator Dry is packaged in an easy-to-use shaker container and can be added through inductors or over the top. The dry formulation eliminates cold-weather storage concerns and provides a longer shelf life than liquid products.

FEATURES AND BENEFITS

Application Information

Preventive: 1 to 2 shakes (0.75 - 1.5 g) per 400 litres of spray solution.

Curative: Apply directly to foam that has already developed.

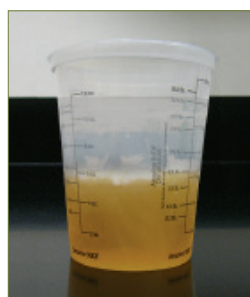
Water hardness, temperature and individual spray-tank mixtures may affect the amount needed. Adjust the rate used to achieve desired foam control.

FOAMINATOR can be introduced through induction systems or through the tank lid opening.

FOAMINATOR will not interact with any of the chemicals to which it is applied.



Foam in cup – no
Foaminator Dry



Foaminator Dry
suppresses foam



REGION

All



USE RATE

0.75 - 1.5 g per 400 litres of
spray solution



PACKAGING

6 x 227 g



ACTIVE INGREDIENTS

Dimethylpolysiloxane,
polypropylene glycol, silicon
dioxide, 15.5%

Constituents ineffective as
spray adjuvant, 84.5%

